



Universidade Federal
de Santa Catarina

Projektor NEC



Alternativa de Uso

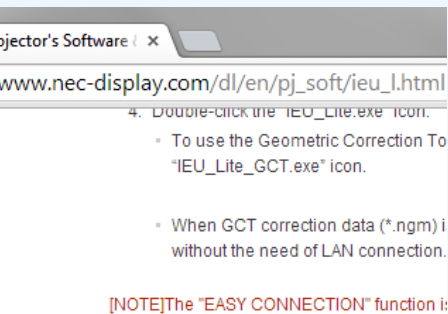
Setor de TI Maio/2014



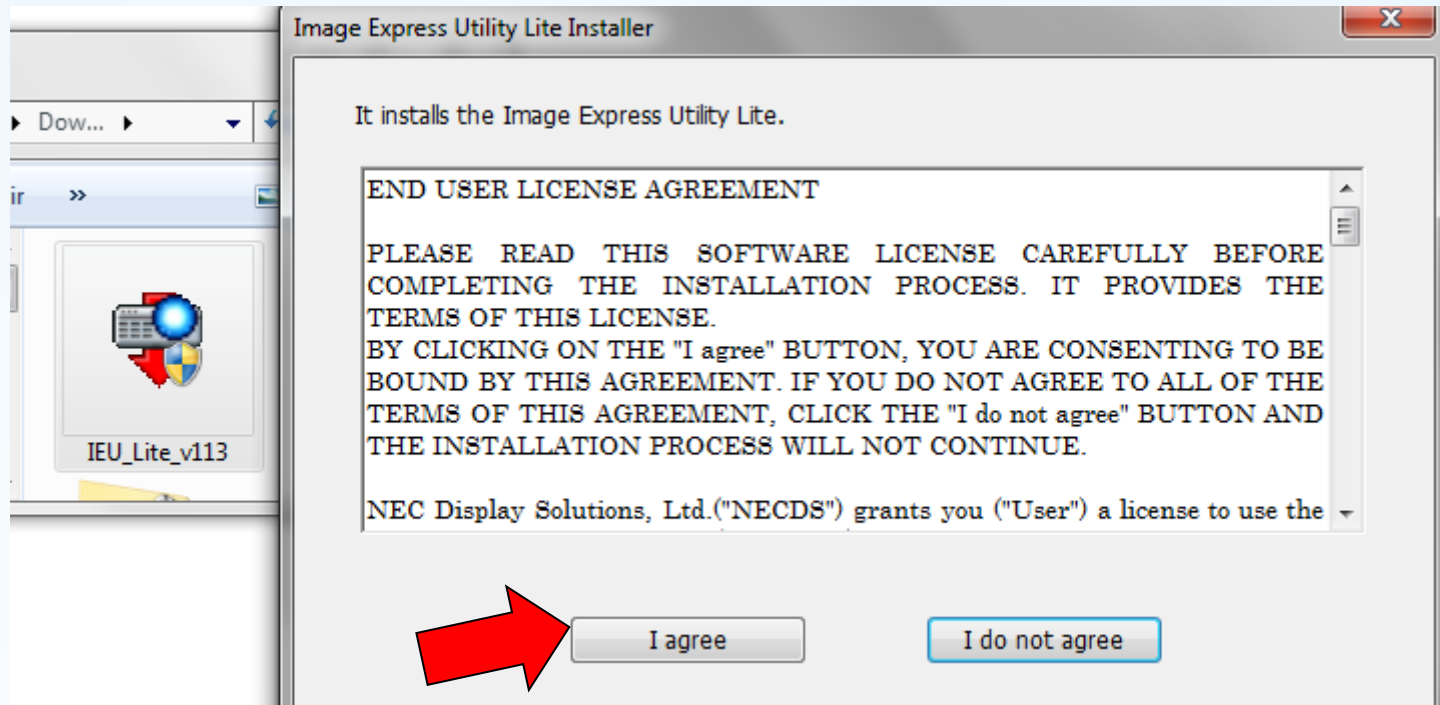
Universidade Federal
de Santa Catarina

Instalação

1. Download “Image Express Utility Lite (Ver.1.13)” <http://goo.gl/80fOp>



[Go to download](#)

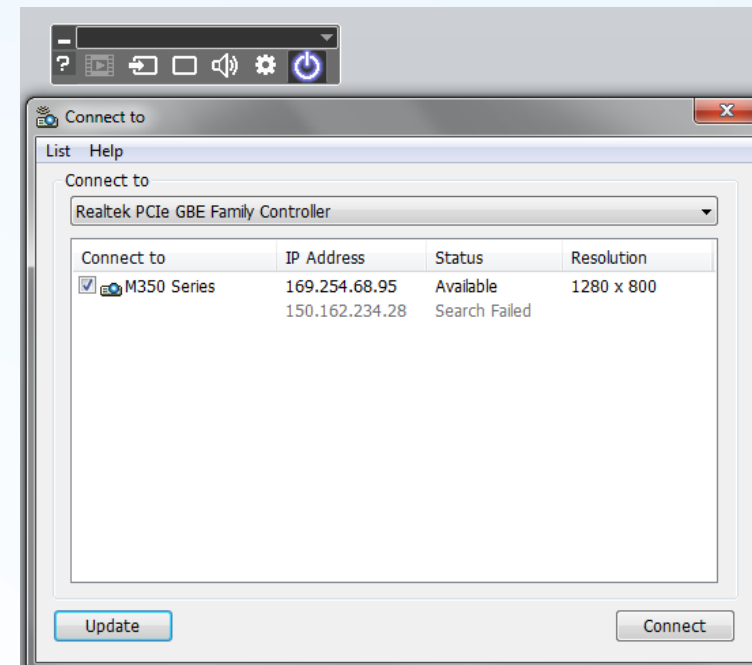
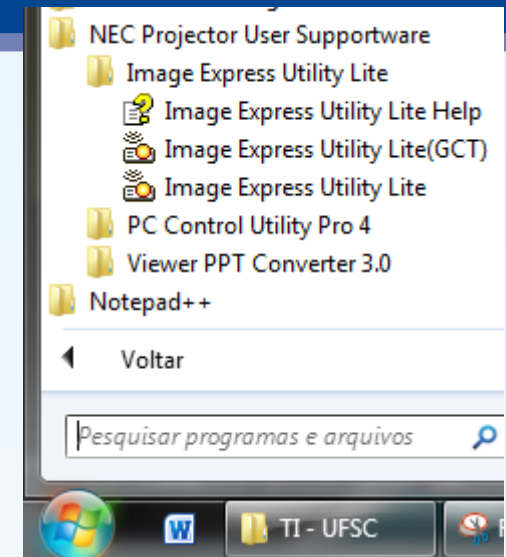




Universidade Federal
de Santa Catarina

Utilização

1. Ligue o projetor
2. Conecte o cabo de rede ao computador
3. Abra o Programa “Image Express Utility Lite”
4. Clique em “Conect”

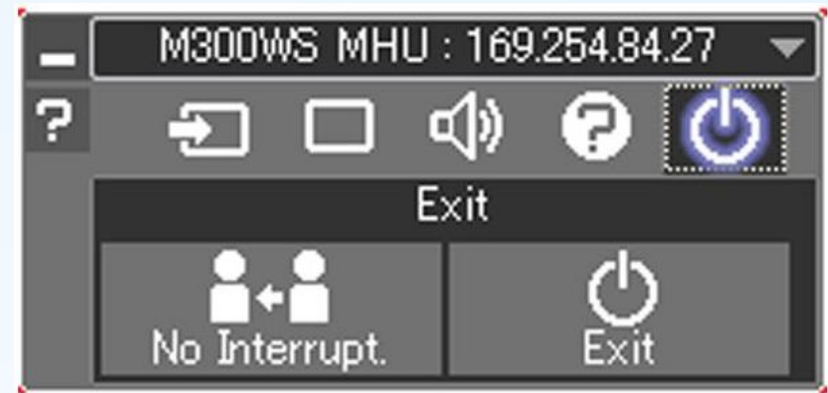




Controles Adicionais

Universidade Federal
de Santa Catarina

- Para Desligar



- Para congelar a tela

